

# Log Finishes

**High purity, One and Two Coat Systems engineered for Logs Homes.  
Six Beautiful Colors: Honey, Light Honey, Light Cedar, Brown Cedar, Cinnamon Stick & Stone.**

**Tough Log Coatings that employ 100% Natural ingredients for a  
100% Natural (and safe) home.**



# Earthpaint Log Finishes



**Earthpaint**<sup>™</sup>  
because you care

**Rainforest Sealer:** An excellent Base Coat indoors or out. This formula has a great deal of flexibility which allows it to move with the wood and act as the perfect tether for top coats. Contains Pine Resin from Georgia. It's actually waste from paper manufacturing. A tough, Linseed based resin mixed with Beeswax, Citrus and Zinc Borate are coalesced by the Citrus to lock the Zinc Borate into the body of the wood. Can be used as a single coat or top coated with Mountain XT for greatest longevity.

ZINC BORATE CAS Number 138265-88-0 TSCA Number 1332-07-6  
EPA Reg. Number 1624-120

**Mountain XT-** Patented technology based on nuts provides excellent microbial, UV and moisture protection. This Top Coat is harder than Rainforest Sealer yet amazingly flexible even after harsh exposure. XT is the best solution for long term protection on log and wood siding and the perfect top coat for Rainforest Sealer. Dirt will wash off easily, eliminating the first food source for microorganisms entering a log home. The zinc borate safely creates an inhospitable environment for anything in the wood and cashew resin has natural defenses to the sun and microbial growth. Zinc Oxide provides extra uv radiation protection as well microbial protection.

## Rainforest Sealer

## Mountain XT



Earthpaint Incorporated, 828-258-2580, [Orders@earthpaint.net](mailto:Orders@earthpaint.net)

# Earthpaint Log Finishes

## Log & Siding Colors

Colors vary with monitors and print.  
order samples and test on wood for best results.



Honey



Light Cedar



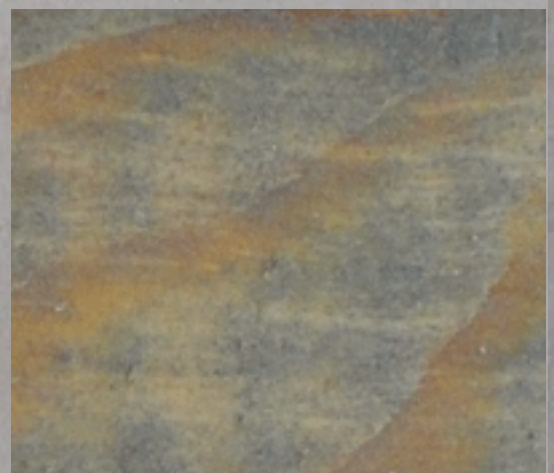
Cinnamon Stick



Brown Cedar



Light Honey



Stone

# Earthpaint Wood Finishes

## Exterior Usage Guide

Base Coat | Top Coat

*br= brushed*

		Base Coat		Top Coat
<b>Decks</b>				
	Flat	br	Mountain XT	None
	Honey Gloss	br	Rainforest	br Mountain XT
<b>Wood Siding</b>		br	Rainforest	br Mountain XT
<b>Logs</b>				
	Log Flat	br	Rainforest	None
	Honey Gloss	br	Rainforest	br Mountain XT
<b>Timbers</b>		br	Rainforest	br Mountain XT



Earthpaint Incorporated, 828-258-2580, [Orders@earthpaint.net](mailto:Orders@earthpaint.net)

# Earthpaint Wood Finishes

## Interior Usage Guide

Base Coat | Top Coat

	Base		Top	
<b>Wood Floors</b>				
Flat Rubbed	mb	Rainforest	mb	Rainforest
Satin Rubbed	mb	Bio Poly	mb	Bio Poly
Natural Gloss	mb	Bio Poly x 2	mo	Mountain, 1-2 coats
Honey Gloss	mo	Mountain	mo	Mountain 2-4 coats
<b>Trim &amp; Furniture</b>				
Flat Rubbed	br	Rainforest	hr	Rainforest (optional)
Satin Rubbed	hr	Rainforest	hr	Mountain( w, br, sp, )
Satin Rubbed	br	Rainforest	hr	Bio Poly
Honey Gloss	br	Mountain	br	Mountain 2-4 coats
<b>Timbers</b>				
Flat	br	Rainforest	hr	Rainforest (optional)
Satin Rubbed	br	Rainforest	hr	Bio Poly
Honey Gloss	br	Mountain	br	Mountain 2-4 coats

### Application Methods

*mo= mopped*     *br= brushed*  
*w= wiped*         *hr = hand rubbed*  
*Sp= sprayed*     *mb = machine buffed*  
*Ro= Rolled*



# Earthpaint Log & Siding

## Application Instructions



### Preparation for Log Homes:

1. Apply coating to a test area, allow to dry overnight. Review for sensitivities, color, full absorption etc. Apply top coat if applicable, review for color and coverage.
2. Kill Mildew or other fungi and algae present on or in the wood. Some microbial growth is not easily visible especially when uncoated logs sit on a jobsite. When in doubt, Clean it.
3. Wet the wood.
4. Add 4oz TSP Tri-Sodium Phosphate or it's equivalent to 1 quart bleach and 3 quarts of water.
5. Wear protective goggles, clothes, gloves and respirator. Cover plants. Apply generously to the wood using a brush, roller, airless sprayer or garden pump sprayer. Let solution soak the wood, staying wet for 15-20 minutes. While it is soaking into the wood, scrub the surface with a stiff bristle brush to help to open up the mill glaze so stain can penetrate. Keep the surface wet with the cleaning solution during the scrubbing process.
6. Pressure wash the surface clean. Avoid damaging the wood by getting too close to the surface but at the same time stay within 12" of the surface. Adjust nozzle size accordingly.
7. Let surface dry for 3 days or until the moisture content of the wood is below 18%.
8. Check surface. Use sandpaper to smooth any areas that need it and to remove any mill glaze that didn't get removed from scrubbing.
9. For wood that is stubbornly stained it may be necessary to repeat the cleaning outlined or to use oxalic acid crystals to bleach the stains out.
10. Before applying coating fill cracks and joints according to manufacturers instructions.
11. Earthpaint Wood Finishes are high purity products optimized to soak into white pine logs overnight. Since logs have a great amount of variation and porosity it is best to Test to make sure full absorption occurs overnight on the logs or siding you are coating. Simply add 16 oz per gallon of our Pure Citrus Solvent on less absorptive logs and siding to gain full penetration. We do not use petrochemical solvents like mineral spirits for health reasons.

### Application to Raw, Dry, Uncoated, Weathered Wood:

1. Stir zinc borate and oxide pigments up from the bottom of the can.
2. Use a high quality natural bristle brush.
3. Either spray and backbrush or simply brush on a thin uniform coat. Keep a wet edge and work with the wood grain to avoid lap marks.
4. Check surface after a couple hours. Make sure there are no runs, drips, uneven areas. Dry Brush any areas that require more attention. Typically this is the knots, heartwood and burls that accept stain at different rates than other areas of the wood. Use a dry brush or slightly damp brush, avoid over saturation.
5. Allow product to soak into the wood overnight. Oil Soaked rags in piles can self ignite. Make sure any oil soaked rags are put in water and not piled up.
6. Apply Top Coat if applicable in the same manner as above. Mountain XT can be sprayed with an airless sprayer but it is best to backbrush anything that is sprayed to insure the best bond and coverage.
7. Clean tools with 1qt Citrus Solvent Cleaner mixed with 1qt water. Give a final rinse to sprayers and brushes with undiluted Citrus Solvent Cleaner until clean. Dry brushes with a rag.

**Maintenance:** Lightly wash the building every year with a hose or pressure washer. Conduct yearly inspections on each side of the building. Fill cracks and recoat as needed. For surfaces with a single coat a spot maintenance can be done by brushing on a clear coat of Rainforest or Mountain XT and wiping off any excess that doesn't soak in. This is to prevent the need to recoat the entire house and it is wiped so that it blends in better with the rest of the building. When a full coat is needed wash the surface as outlined above and apply a fresh coat of Rainforest or Mountain XT.

### NOTES:

1. Surface must be dry, absorbent, weathered wood. On new wood or non porous surfaces plan to wipe surface down by the end of the day. Don't leave any residue on the surface and put rags in water when done. Strip previously coated surfaces or paint with Clear Skies Wall paint.
2. Rainforest is a one application product. Top Coat with Mountain XT. If a second coat is desired for the rubbing oil beauty that it imparts then the second coat must be hand rubbed. Wipe of all excess and soak rags in water.
3. Mountain XT is a good base coat for decks getting one coat only. This is because the cashew resin we use is extremely water and fungi resistant. For more durability use a two coat approach with Rainforest Sealer as the flexible base coat and Mountain XT as the weather barrier top coat. Do not top coat Mountain XT on pressure treated decks.

**Earthpaint Incorporated, 828-258-2580, [Orders@earthpaint.net](mailto:Orders@earthpaint.net)**