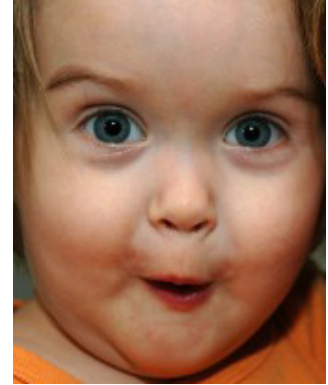




Earthpaint
because you care



Pure Citrus Solvent

This Pure Citrus Solvent differs from Citrus Solvent Cleaner because it is approximately 10% stronger not water immiscible and is better suited for diluting stains, coatings and for heavy cleaning.

Replaces Petro-Poison solvents, including mineral spirits. This is the biodegradable distillate from oranges, grapefruits, lime and lemons. It is one of the only solvents that Earthpaint Inc will tolerate in its coatings. The main ingredient, D-limonene, has a GRAS (Generally Recognized As Safe) rating by the FDA as a food additive. Three times stronger than mineral spirits yet it has a pleasant aroma. Nevertheless, Pure Citrus Solvent is a strong solvent that must be used with respect.

Earthpaint's method of Oil Based Brush Cleaning 1, 2, 3 : Our method begins by filling a gallon pail 1/2 full with Pure Citrus Solvent. **1.)** Smash the brush quickly down into the citrus, straight down to the bottom, pushing the heel of the brush into the pail, fast enough to get the bristles to flay outward pushing liquid into the heel and lifting suddenly allowing the bristles to release whatever paint is in them. This frees the heart of the brush from the coating that causes it to harden when not cleaned. It is the heel of the brush that must be cleaned to prolong it's life. **2.)** Continue to smash the brush up and down in the solution until it is clean. This usually is very fast, a dozen smashings will often suffice. To insure there is no residue in the bristles, rinse with undiluted citrus solvent by pouring an ounce or so over the bristles. A brush spinner if available is a good finale` but could disfigure the brush if not done carefully. **3.)** Dry brush with rag, smooth bristles, insure brush is clean, if not repeat. wrap in it's container pressed to desired shape and hang bristles down until next use. Let sediment settle in can with lid on and reuse clean upper layer of Solvent. If using Earthpaint coatings the sediment can be composted after being dried out.

Asheville, NC 28806 828-258-2580 www.earthpaint.net